

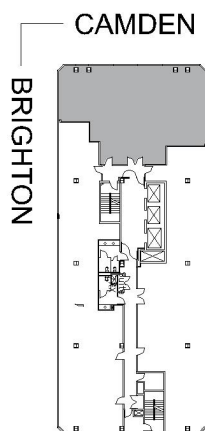
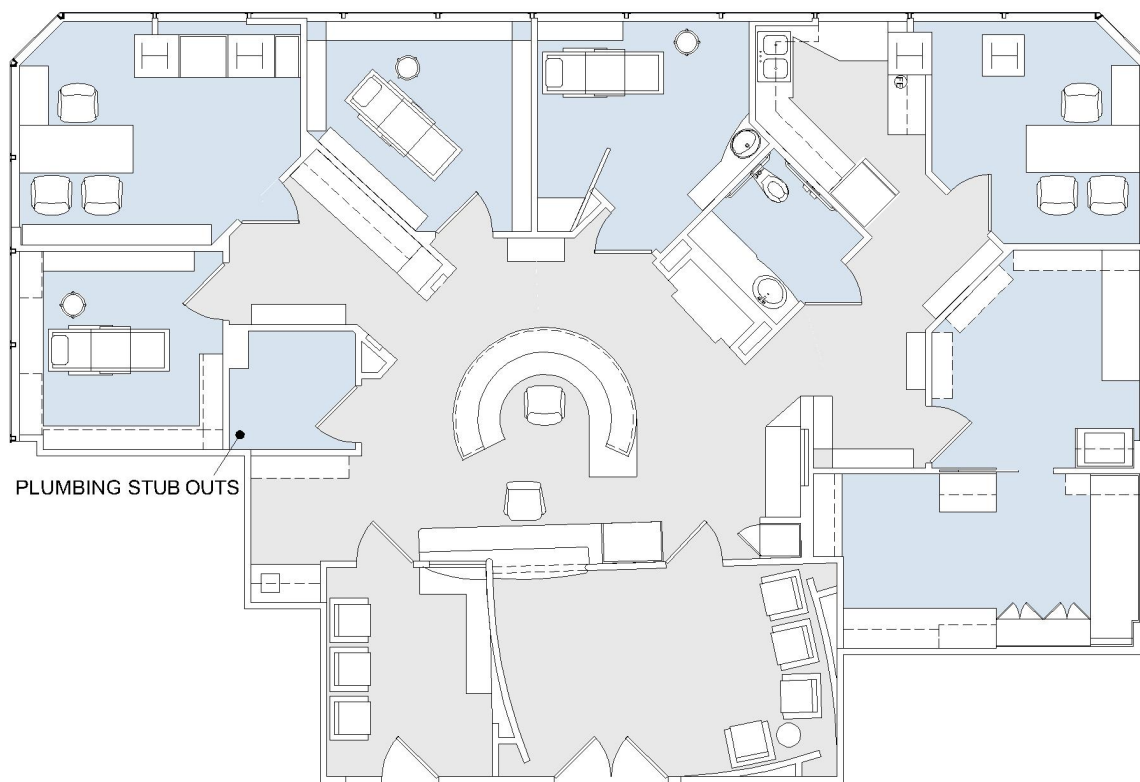
414

CAMDEN MEDICAL ARTS

SUITE 750 | 2,520 RSF

BEVERLY HILLS

N CAMDEN DRIVE

**SUITE CONFIGURATION  
MEDICAL SPACE**

OFFICES:	2
EXAM ROOM:	3
LAB ROOM:	1
RECEPTION:	2
KITCHEN:	1
FILE ROOM:	1
PRIVATE RESTROOM:	2

NOT TO SCALE  
FURNITURE NOT INCLUDED

For more information, please contact:

310.255.7777  
leasing@douglasemmett.com

**Douglas  
Emmett**