

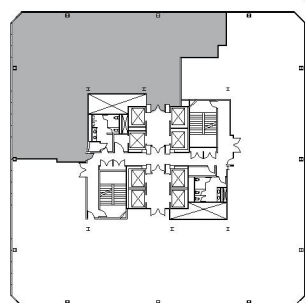
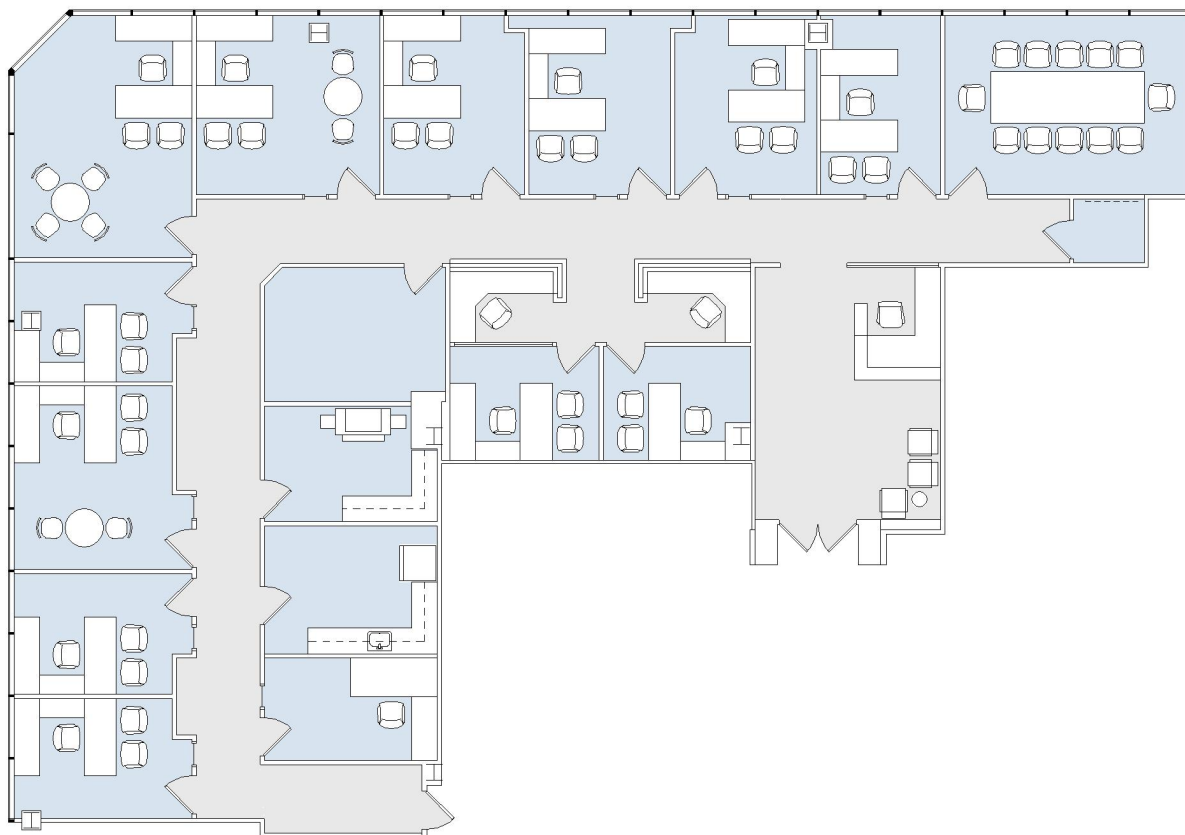
1801

CENTURY PARK PLAZA

SUITE 1550 | 4,875 RSF

CENTURY CITY

CENTURY PARK EAST

SANTA MONICA BLVD
CENTURY PARK E

SUITE CONFIGURATION

OFFICES:	13
CONFERENCE ROOM:	1
RECEPTION:	1
KITCHEN:	1
COPY ROOM:	1
IT ROOM:	1
STORAGE ROOM:	1

NOT TO SCALE
FURNITURE NOT INCLUDED

For more information, please contact:

310.255.7777
leasing@douglasemmett.com**Douglas
Emmett**