

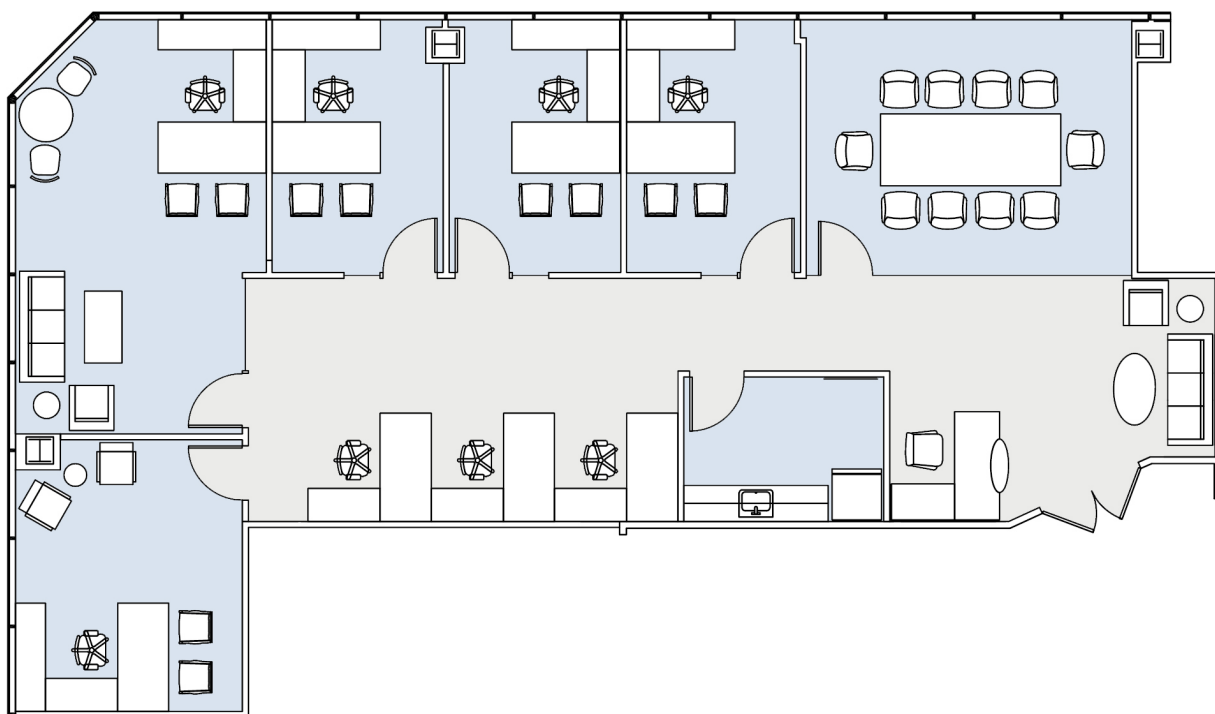
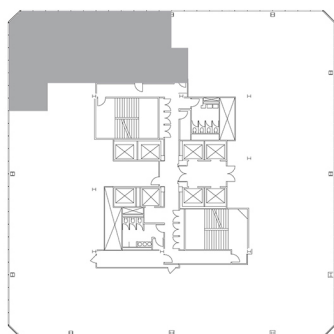
1801

CENTURY PARK PLAZA

SUITE 520 | 2,360 RSF

CENTURY CITY

CENTURY PARK EAST

SANTA MONICA BLVD
CENTURY PARK EAST

AS-BUILT CONFIGURATION

OFFICES:	5
CONFERENCE ROOM:	1
RECEPTION:	1
KITCHEN:	1

NOT TO SCALE
FURNITURE NOT INCLUDED

For more information, please contact:

310.255.7777
leasing@douglasemmett.com**Douglas
Emmett**