

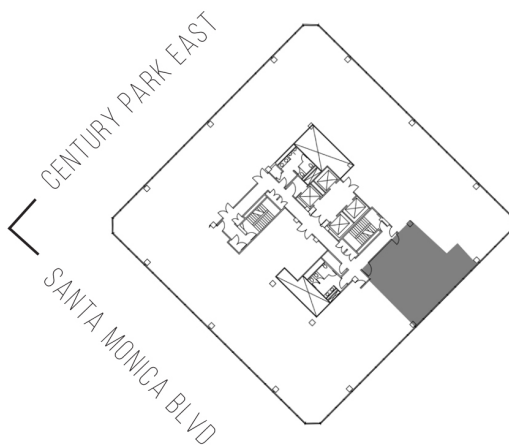
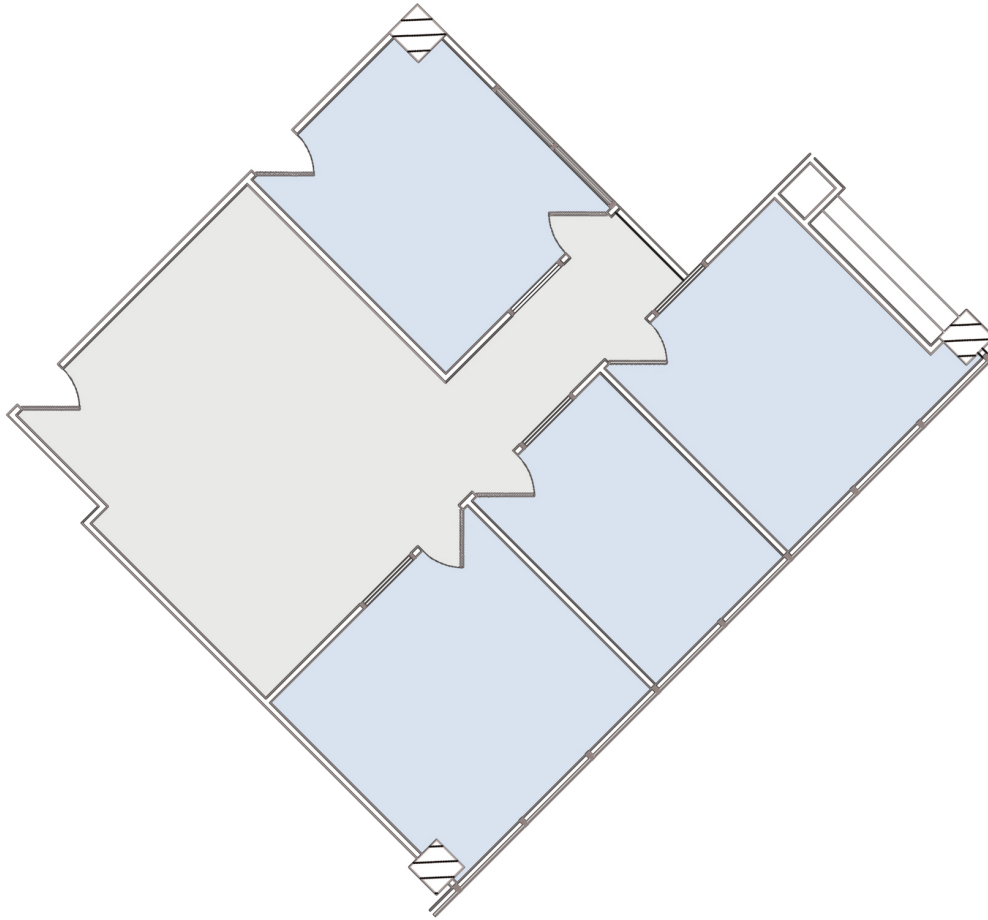
1801

CENTURY PARK PLAZA

SUITE 1810 | 1,395 RSF

CENTURY CITY

CENTURY PARK EAST



AS-BUILT CONFIGURATION

OFFICES:	3
FILE/COPY ROOM:	1

NOT TO SCALE

For more information, please contact:

310.255.7777
leasing@douglasemmett.com

