

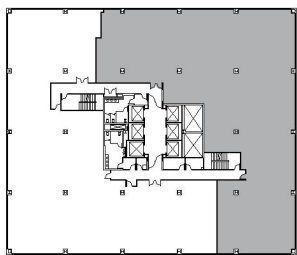
15303

SOG-COMERICA BANK BUILDING

SUITE 1200 | 10,024 RSF

SHERMAN OAKS/ENCINO

VENTURA



VENTURA

SEPULVEDA

SUITE CONFIGURATION

OFFICES:	10
CONFERENCE ROOM:	2
RECEPTION:	1
KITCHEN:	1
FILE ROOM:	1
SERVER ROOM:	1
STORAGE:	3

NOT TO SCALE
FURNITURE NOT INCLUDED

For more information, please contact:

310.255.7777
leasing@douglasemmett.com

**Douglas
Emmett**