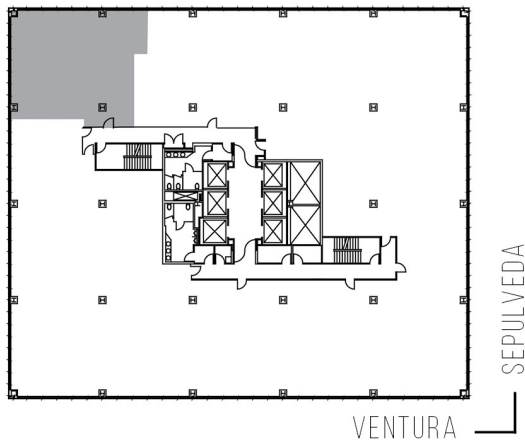
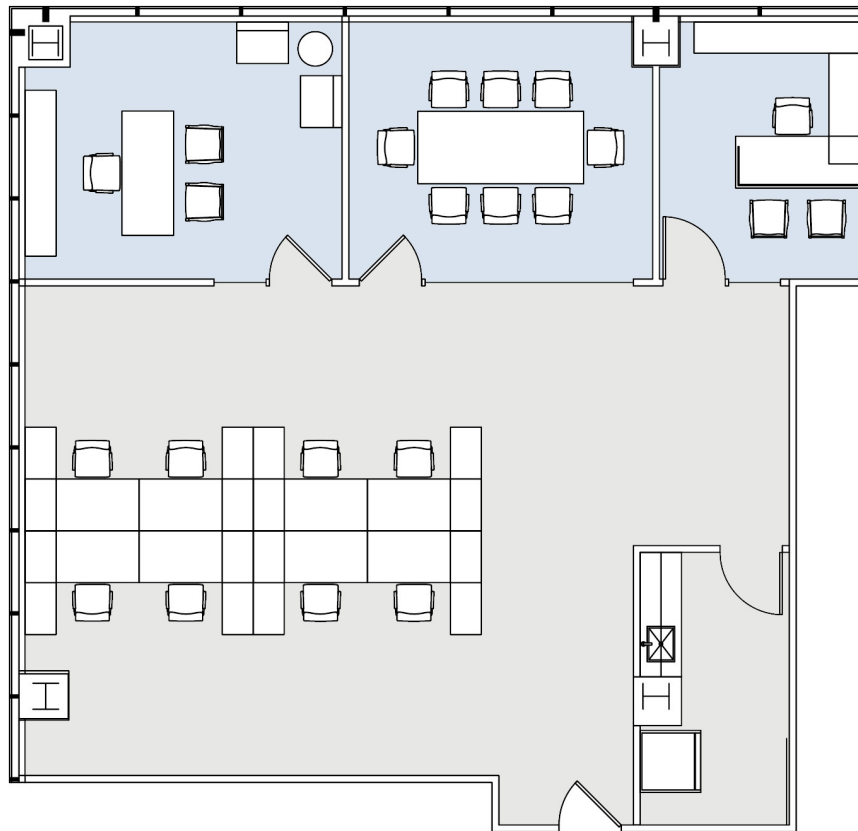


# 15303 VENTURA

SOG-COMERICA BANK BUILDING

SUITE 610 | 1,816 RSF

SHERMAN OAKS/ENCINO



### AS-BUILT CONFIGURATION

OFFICES:	2
CONFERENCE ROOM:	1
KITCHEN:	1
RECEPTION:	1

NOT TO SCALE  
FURNITURE NOT INCLUDED

For more information, please contact:

310.255.7777  
leasing@douglasemmett.com

**Douglas  
Emmett**