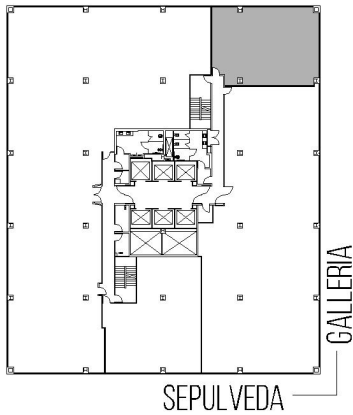
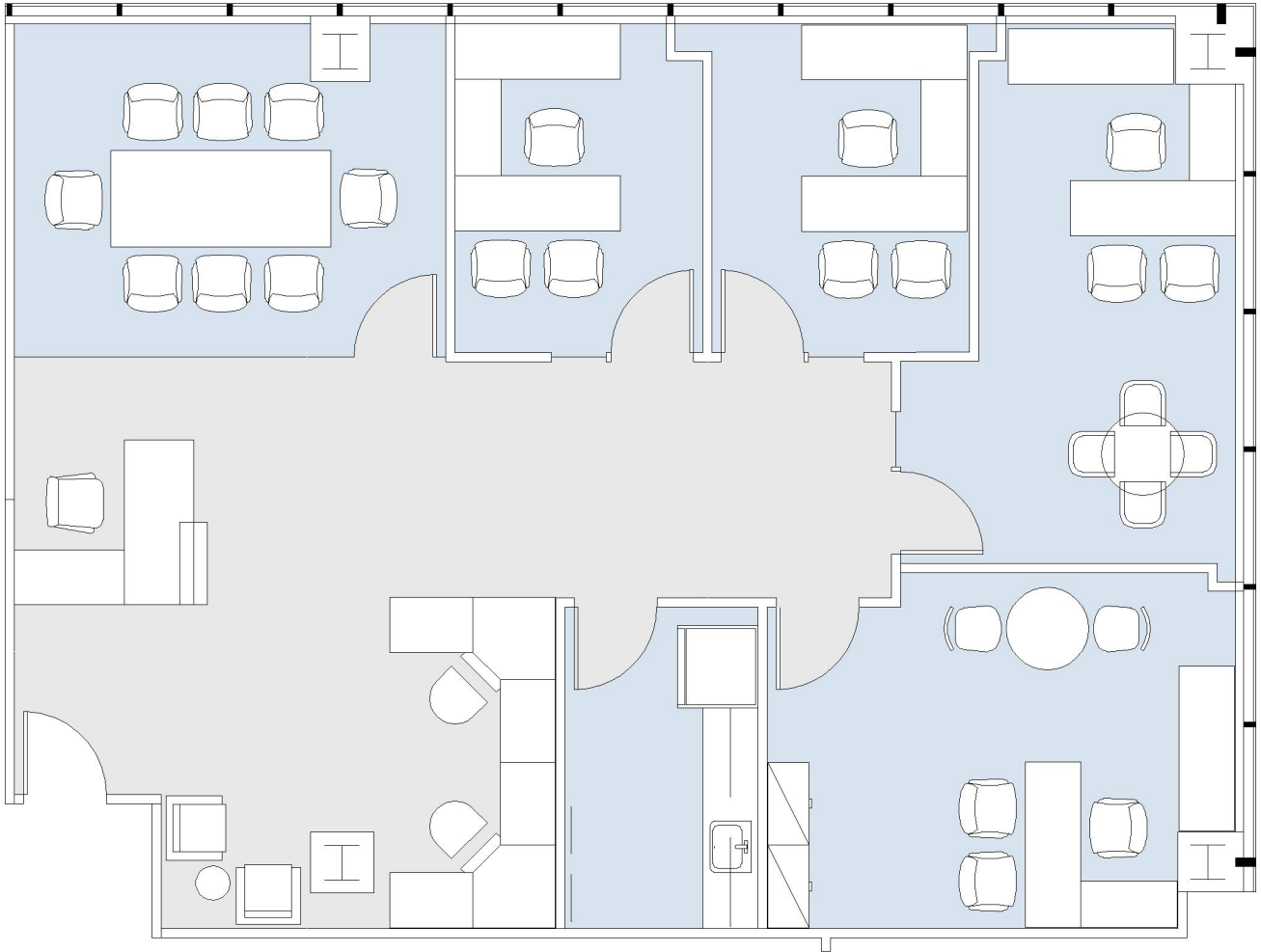


15303 VENTURA

SOG-COMERICA BANK BUILDING

SUITE 1120 | 1,814 RSF

SHERMAN OAKS/ENCINO



AS-BUILT CONFIGURATION

OFFICES:	4
CONFERENCE ROOM:	1
RECEPTION:	1
KITCHEN:	1

NOT TO SCALE
FURNITURE NOT INCLUDED

For more information, please contact:

310.255.7777
leasing@douglasemmett.com

**Douglas
Emmett**