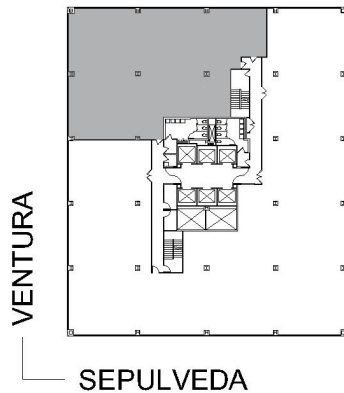
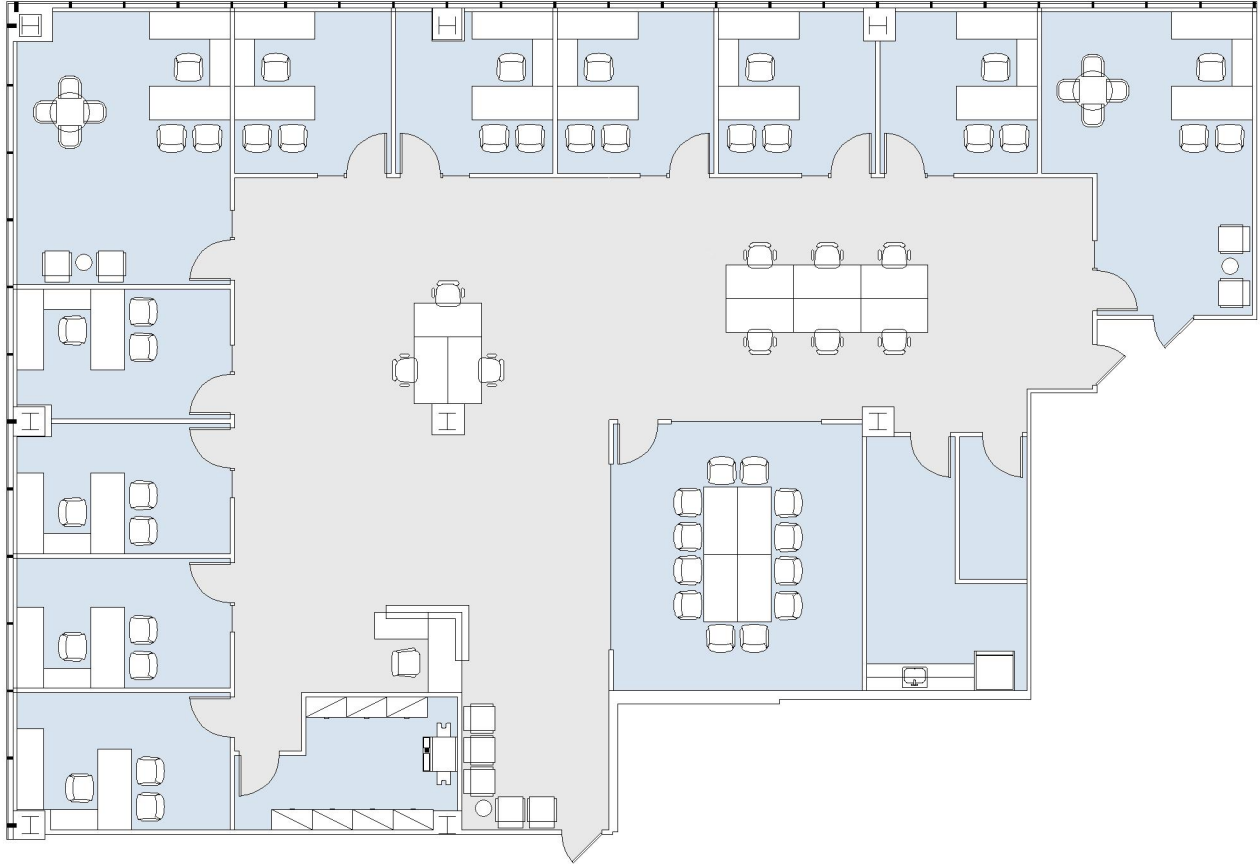


15303 VENTURA

SOG-COMERICA BANK BUILDING

SUITE 675 | 5,858 RSF

SHERMAN OAKS/ENCINO



SUITE CONFIGURATION

OFFICES:	11
CONFERENCE ROOM:	1
RECEPTION:	1
KITCHEN:	1
IT ROOM:	1
STORAGE:	1

NOT TO SCALE
FURNITURE NOT INCLUDED

For more information, please contact:

310.255.7777
leasing@douglasemmett.com

**Douglas
Emmett**