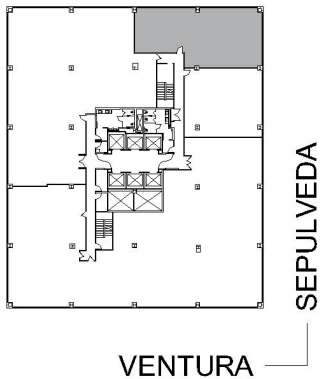
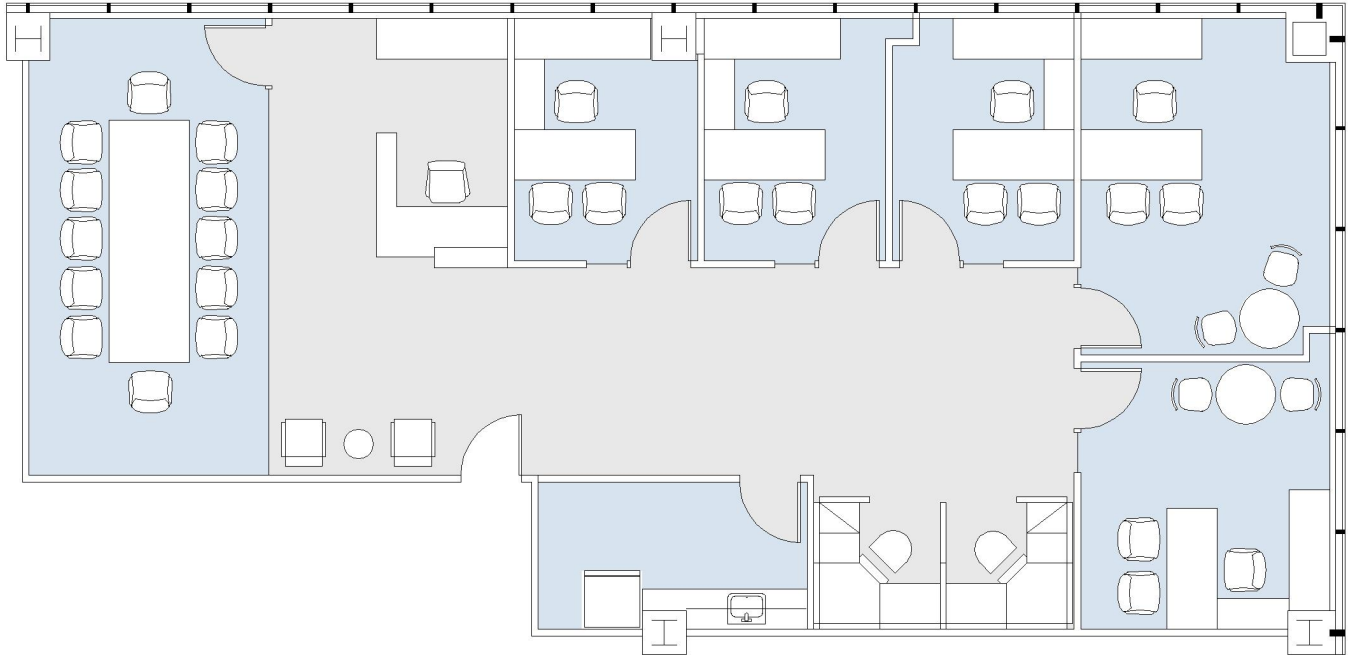


15303 VENTURA

SOG-COMERICA BANK BUILDING

SUITE 870 | 2,238 RSF

SHERMAN OAKS/ENCINO



SUITE CONFIGURATION

OFFICES:	5
CONFERENCE ROOM:	1
RECEPTION:	1
KITCHEN:	1

NOT TO SCALE

FURNITURE NOT INCLUDED

For more information, please contact:

310.255.7777

leasing@douglasemmett.com

**Douglas
Emmett**